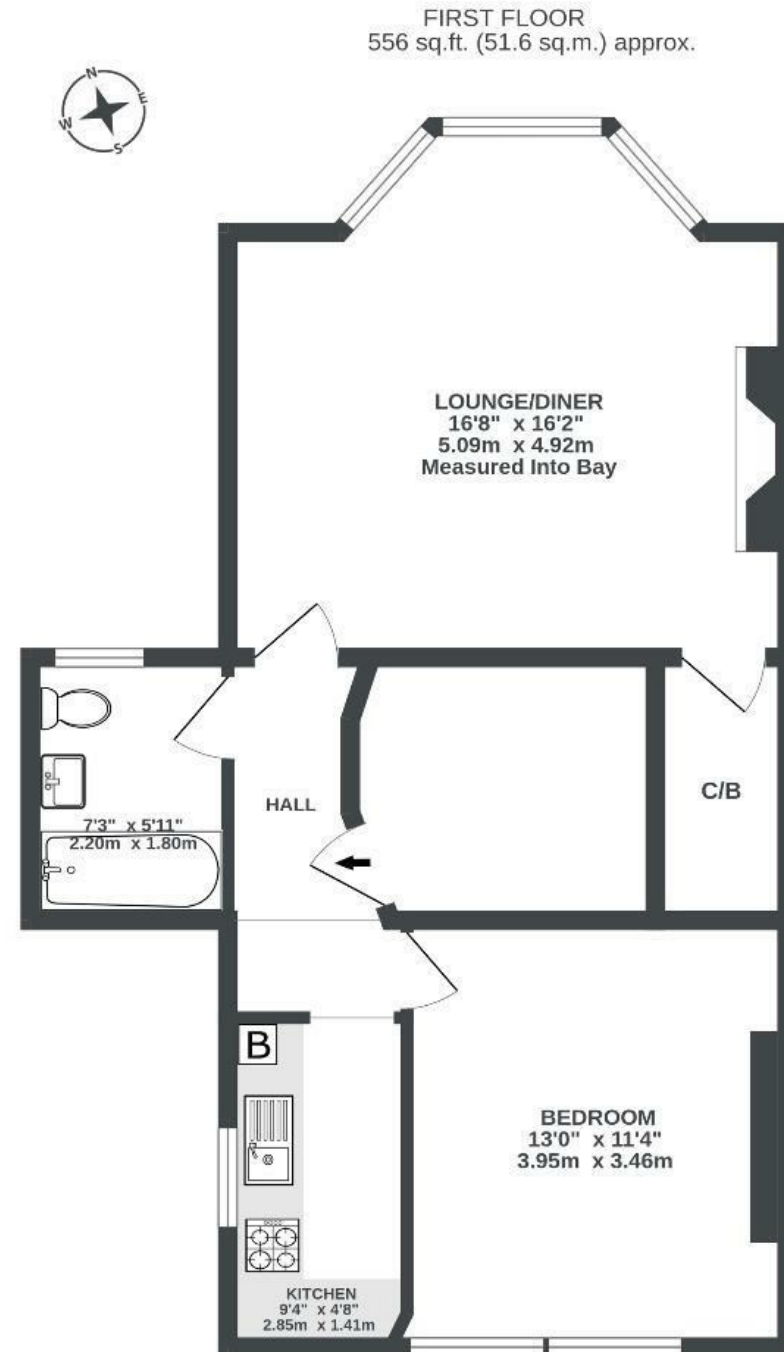


Cromwell Road

ST ANDREWS

APPROXIMATE FLOOR AREA
51.6 SQM / 556 SQFT



Illustrations are for reference purposes only, measurements are approximate, not to scale.

Boardwalk

Cromwell Road

ST. ANDREWS, BRISTOL



£260,000



1 Bedrooms



Bristol, BS6



1 Bathrooms

5HA

"This has been my first owned property and I can't believe it's been 10 years! I have loved living in St Andrews, and will miss so much about this place; from all the amazing food shops on Gloucester Road, relaxing in St Andrew's Park, and eating out in the many great restaurants within walking distance; Saigon Kitchen and Bokman in particular. The layout of the flat is great, with nice high ceilings, large windows and space in all the right places."

